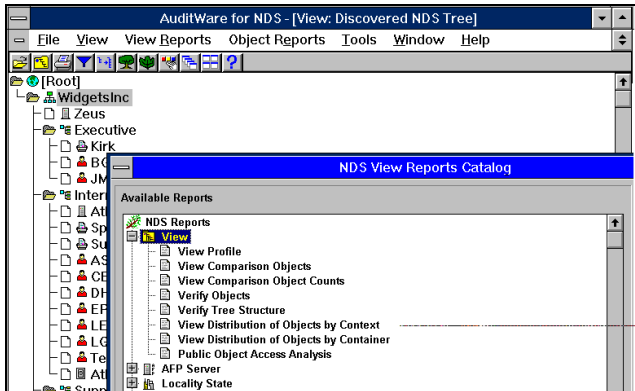


Advanced NDS Object Reporting

INTRODUCING AUDITWARE™ FOR NDS

AuditWare for NDS is a Windows-based advanced NDS object reporting and security analysis tool. Using AuditWare for NDS, network managers generate reports using object and tree information captured to a back-end database, not the "live" network. This off-line approach provides network managers with native comparison reporting and powerful object analysis capabilities. Additionally, AuditWare for NDS comes with several *first-to-market* capabilities required for any NDS site, such as **The Enforcer™** – object comparisons, **The Assistant™** – a compilation of security white papers and tips, and **The Object Rights Expert™** – easy ACL analysis.



AuditWare for NDS was built from the ground up as an advanced NDS reporting tool.

AuditWare for NDS is **one product in a fully integrated NDS management suite** from Preferred Systems, Inc. (PSI), the leader in directory services management tools.

The **PSI Suite** is designed to provide the framework for NDS analysis, auditing and change management. For example, when using AuditWare for NDS in conjunction with PSI's **DS Standard**, *the leading NDS management tool*, network managers can find potential security breaches and take the appropriate steps to circumvent them.

AuditWare for NDS was built from the ground up as an **advanced NDS reporting tool**. As a result, preparing complex NDS reports is as **easy** as highlighting the desired objects and selecting the report.

STEALTH & DANGEROUS USERS

The robust security system inherent in NDS provides network managers with the granular ability to set and control access privileges to all "branches" and "leaves" of the NDS tree. **AuditWare for NDS takes the fear out of analyzing and auditing your ever-evolving NDS tree.**

For example, use AuditWare for NDS to locate "stealth" users, which can be any object (not just user objects) that the administrator cannot see because the "browse" privilege has been filtered out. Or, use AuditWare for NDS to locate "dangerous" users; these users have supervisor-like privileges but do not meet minimum password requirements. AuditWare for NDS can also take the fear out of reporting on volume restrictions, password settings, login restrictions, access privileges, and more.

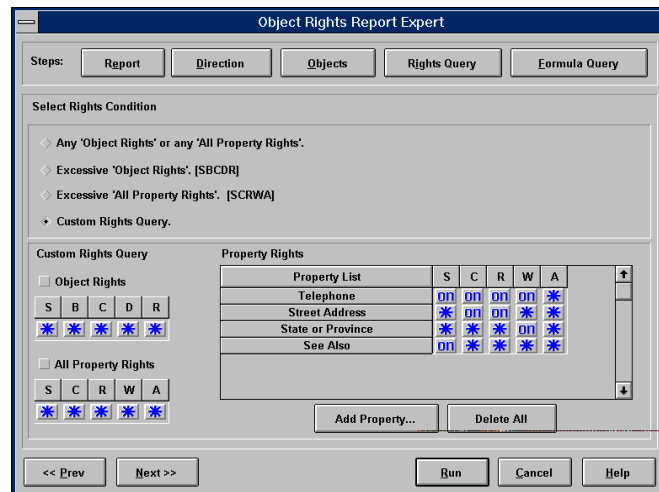
PUTTING AUDITWARE FOR NDS TO WORK

AuditWare for NDS is ideal for network managers who need to perform the following tasks:

- ◆ Ensure security compliance with The Enforcer
- ◆ Review the latest information on NDS security with The Assistant
- ◆ Analyze rights and ACLs with The Object Rights Expert
- ◆ Secure against "stealth" and "dangerous" users
- ◆ Produce Object Profile Reports
- ◆ Perform Tree/Object Analysis
- ◆ Perform Tree Trending
- ◆ Perform comparisons and baselines
- ◆ Review Tree/Object distribution
- ◆ Enforce Tree and Object standards
- ◆ Audit access privileges

THE OBJECT RIGHTS EXPERT™

The PSI Object Rights Expert is the easiest way to analyze object rights or ACLs (Access Control Lists). The Objects Rights Expert walks network managers through even the most complex queries. To determine who has access to what and how their rights were granted, simply select the objects in question and build a query in five easy steps. AuditWare for NDS also includes several pre-defined rights reports for one-step analysis.



Five easy steps to object rights.

THE ASSISTANT™

As a result of the overwhelming success of The Assistant in DS Standard, AuditWare For NDS includes its own Assistant. The Assistant is more than a help file; it is a single collection point of all the information a network manager needs to manage and analyze NDS. The Assistant contains "real-world" information on how to keep your NDS tree secure, including: NDS security white papers, tips from the field, Novell Application Notes, and more.

The Assistant is also ideal for training. For example, if you are unsure about which rights are inheritable, the definition of effective rights, or just need to review security examples, look it up in The Assistant.

NATIVE OFF-LINE REPORTING

"...in the right place, at the right time, with the right approach."
-- PC WEEK, Cover Story

Work Without Affecting Users

One of the greatest advantages of using AuditWare for NDS is the fact that all reports are generated from an off-line database. You can run as many reports as needed without affecting the production or "live" network. More dramatically, after the database is populated via the "Discover" process, you are free to disconnect from the network and work off-site or in a stand-alone mode.

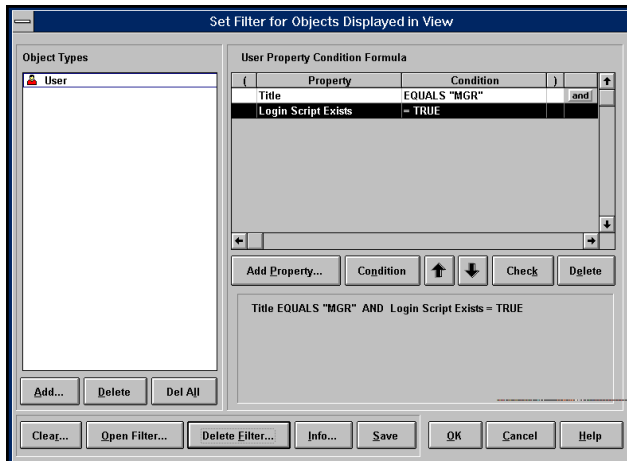
The Benefits of Off-Line

- ◆ Generate unlimited reports without any server "hits"
- ◆ Work during production hours
- ◆ Create reports from the same "slice" in time
- ◆ Compare data from different Discover times – Time Line Reporting
- ◆ Work off-site
- ◆ Distribute audit information electronically
- ◆ Create baseline reports from any Discover
- ◆ Retain a backup of Discover for "proof"

ADVANCED FILTERS

The AuditWare for NDS filter engine provides network managers with the ability to create and store complex queries quickly and easily. Build queries that include multiple object types, multiple property settings, Boolean logic, and "calculated" fields. Then, instruct AuditWare for NDS to either "Set" a filter showing only the desired objects or to "Select" the desired objects. Unlike other reporting tools, AuditWare for NDS can create complex report filters with a simple mouse click.

Create and save your own filters, or use any of the 20+ filters already created for you in AuditWare for NDS.



A filter to display users who are managers with a login script.

Sample AuditWare for NDS Saved Filters

- ◆ **Empty Groups & Organizational Roles**
- ◆ **Users with personal Login Scripts**
- ◆ **Objects with Aliases**
- ◆ **Containers with Excessive Objects**
- ◆ **Users not requiring a Password**
- ◆ **Trustees of the Root Directory**
- ◆ **Directory Maps with potential Excessive Rights**
- ◆ **And more...**

SECURITY COMPLIANCE REPORTING

AuditWare for NDS contains a series of compliance reports that compare NDS objects to recommended security settings. Use the following AuditWare for NDS reports to ensure the security of your NDS tree:

- ◆ **Containers** - analyze Containers for security holes
- ◆ **Directory Maps** - analyze Directory Maps for unneeded rights
- ◆ **User Account Restrictions** - analyze users for excessive access abilities
- ◆ **Dangerous Users Analysis** - locate users with potential security breach powers
- ◆ **Excessive Rights** - find objects with too many rights
- ◆ **Security Summary** - list the tree's security at a glance
- ◆ **Non-Authenticated User Access** - via the [Public] object rights, show what is "not-locked" and, therefore, visible to users not logged into the tree

FILE SERVER/VOLUME REPORTS

AuditWare for NDS provides network managers with the essential details regarding NetWare file servers and volumes. Use the following AuditWare for NDS reports to document your servers and volumes:

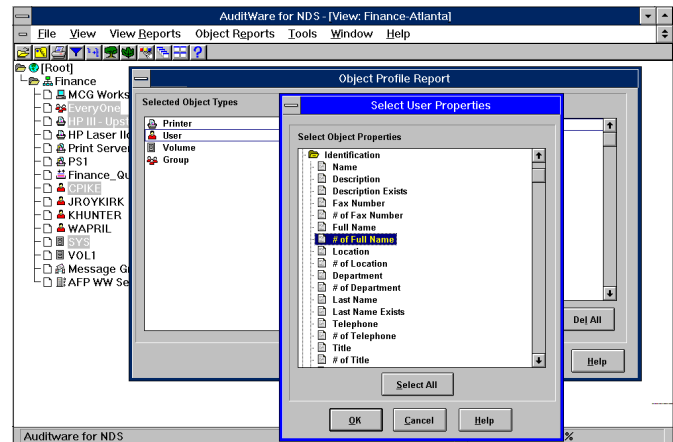
- ◆ **Server/Volume Summary**
- ◆ **Disk space usage by user**
- ◆ **Modules loaded (NLM, DSK, LAN)**
- ◆ **User space usage across servers**
- ◆ **Volume Restrictions**
- ◆ **And more...**

OBJECT PROFILE REPORTS

Use AuditWare for NDS to generate object profile reports. Simply select the desired objects and pick the desired properties for inclusion in the report.

Any AuditWare for NDS report can be exported to a file (dbf, xls, dlm, etc.), saved for later review, print previewed, or set to print sequentially with other reports.

Your AuditWare for NDS reports can also contain "calculated" fields. A "calc" field is a field whose value is derived from other fields. For example, add the following "calc" fields to a User Profile report: Login Script Exists, # of Phone Numbers, # of Group Memberships, Effective Login Script, etc.



Prepare a User Object Profile including "calc" fields.

ANALYSIS REPORTING

AuditWare for NDS also has the ability to analyze your NDS tree design. Rather than manually counting objects and drawing diagrams to determine your tree's structure, use AuditWare for NDS. For example, run the Tree Verify Report to determine if there are too many objects in a container or if your tree is too deep. Or, generate an Object Distribution Report and monitor the growth of your NDS tree by context compared to your partitioning. AuditWare for NDS can also analyze and locate "orphaned" objects, such as Print Servers without Print Queues and Print Queues without Printers.

COMPARISON REPORTING

As your NDS tree evolves and grows, use AuditWare for NDS to compare and trend tree growth, to monitor object changes, and to compare objects.

- ◆ To determine how your tree has changed over time, use the *View Comparison Report* to summarize how many objects were added, deleted, or modified, or to detail the specific list of the changed objects and their differences.
- ◆ To determine how selected objects have changed over time, use the *Fully Distinguished Name (FDN) Comparison Report* to summarize or detail property changes.



- ◆ To compare multiple objects to a single object, use *The Enforcer*. For example, use The Enforcer to generate a report listing any users whose security settings do not match those of the selected "secure" user. As an added benefit when using DS Standard with AuditWare for NDS, network managers can also reset, or "enforce", the security settings for any user objects that do not match "secure" objects.

NOVELL STYLE WINDOWS GUI

As a result of our strategic development relationship with Novell, AuditWare for NDS supports all of the standard NDS objects and uses Novell icons and naming conventions. AuditWare for NDS helps to minimize your learning curve and to ensure all the benefits of ease of use, power and productivity, right out of the box.

HOW TO CONTACT PSI

Contact PSI today for more information at:

Preferred Systems, Inc.

250 Captain Thomas Boulevard

West Haven, CT 06516 U.S.A.

Phone: (800) 222-7638 / (203) 937-3000

Fax: (203) 937-3032

BBS: (203) 937-3019

Compuserve: 73564,354 or GO NVENB (Preferred Systems section)

Internet Mail: sysop@prefsys.usa.com

Internet Home Page: <http://prefsys.com>

Monday - Friday, 8:00 a.m. to 7:00 p.m. EST

A rectangular button with a 3D effect, featuring a dark blue border and a lighter blue gradient background. The text "Back to Outline" is centered in white.A rectangular button with a 3D effect, featuring a dark blue border and a lighter blue gradient background. The text "Next: Here's What Experts Say" is centered in white.