



Warpstock Europe 2005 **Screen Saver Module** **Version 1.5.1** **for** **Doodle's Screen Saver**

Table of Contents

Description.....	2
System Requirements.....	2
Installation.....	2
Manual Installation.....	2
WarpIN Installation.....	2
Known Problems/Limitations.....	3
History.....	4
Contacting the Author.....	4
References.....	4

Description

The Warpstock Europe 2005 Screen Saver Module is an additional module for Doodle's Screen Saver. It has been created to promote Warpstock Europe 2005.

The function of this module is to fetch and display the latest news about Warpstock Europe 2005 from <http://www.warpstock.net>.

Warpstock Europe 2005, the event for OS/2 and eComStation users in Europe, will take place in the city of Dresden, Germany. The three day event will be held from November 18th to 20th at the Leibniz Institute for Solid State and Materials Research Dresden (IFW).

System Requirements

This modules does only work if Doodle's Screen Saver is already installed on the target system. The module does **not** include Doodle's Screen Saver! If you need to install Doodle's Screen Saver prior to installing this module, please download and install the latest version that is available from netlabs.org. The homepage of Doodle's Screen Saver is: <http://dssaver.netlabs.org>

The module has been tested on Doodle's Screen Saver version 1.5. It should also work on version 1.4 of the screen saver!

For further system requirements please look into the `readme` document coming with Doodle's Screen Saver.

Installation

After unpacking the ZIP archive, two installation paths are available:

1. manually copying the `WSE2005.dll` into the modules directory of Doodle's Screen Saver

or

2. using the self extracting and installing WarpIN package `WSE2005.exe`.

Manual Installation

If you know were the screen saver modules for Doodle's Screen Saver are located, simply copy the `WSE2005.dll` into the same directory. (NOTE: This directory should already contain other modules like: `Blank.dll`, `Circles.dll` ...)

Now open the WPS configuration notebook where you normally configure Doodle's Screen Saver and select the Warpstock Europe 2005 module from the list of modules.

WarpIN Installation

Since you have installed Doodle's Screen Saver with WarpIN, you can also install the Warpstock Europe 2005 Screen Saver Module with WarpIN. To do this, simply execute `WSE2005.exe`.

During installation, you have to specify the `Installation path`. This is the directory where the modules for Doodle's Screen Saver are located. The installer will try to detect the module path. However, you should check that the directory that the installer detect is valid!

Figure 1 shows the dialog where the `Installation path` needs to be specified. To

make sure that the module is installed into the correct directory, verify that the directory which is listed as `Installation path` does already contain the other screen saver modules. You can find the directory by searching for `Blank.dll` or `Circles.dll` on your hard drive.

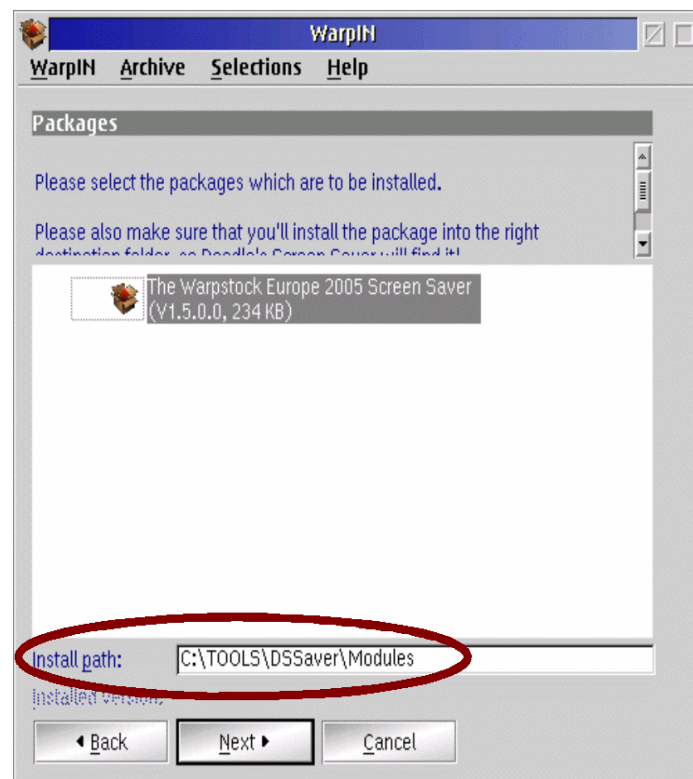


Figure 1 Selecting the correct path

After the WarpIN guided installation is complete, open the WPS configuration notebook where you normally configure Doodle's Screen Saver and select the Warpstock Europe 2005 module from the list of modules.

Known Problems/Limitations

The module works best on a computer that is always connected to the Internet. When the screen saver is activated, the Warpstock Europe 2005 Screen Saver Module will connect to <http://www.warpstock.net> and download the latest. To complete this task successfully, an Internet connection is required.

The module will use a cached copy of the latest news if no Internet connection is available! So the module can also be used on computers that are only occasionally connected to the Internet!

When no Internet connection is available, the module will display the text "retrieving news" for some time and then will switch to a cached copy of the latest news. It can take up to 3 minutes before the cached copy of the latest news is displayed!

If you are using a software that dials automatically when a request for a network connection is made, this screen saver module will trigger a dial up! You cannot disable this and you have been warned that this may result in additional costs for you!

The module has problems with centering and aligning the text if the resolution of the

screen is **below** 1024x786, e.g. 800x600!

And finally, this screen saver does not actually save the screen! :-) The module does not blank the screen after some time or move stuff around to prevent text from “burning into the screen”! However, this is not really a problem with todays screens anyway and the module will use the DPMS settings of Doodle's Screen Saver to switch the screen into standby, suspend or off state! To use DPMS, you have to enable this in the screen saver configuration!

History

Version 1.5.1

- FIX: WarpIN install package should now detect the module path correctly

Version 1.5

- initial version

Contacting the Author

The module has been created by Robert Henschel, a member of the Warpstock Europe 2005 Organizing Team. If you have problems with this module, please contact:

info@warpstock.net

References

Homepage of Doodle's Screen Saver

<http://dssaver.netlabs.org>

Warpstock Europe 2005 Homepage

<http://warpstock.net/WSE2005/index.html>