

# Powerful Daily NDS Management With a "Safety Net"

## RISK-FREE MODELING AND MANAGEMENT

**"...in the right place, at the right time, with the right approach."**

**-- PC WEEK, Cover Story**

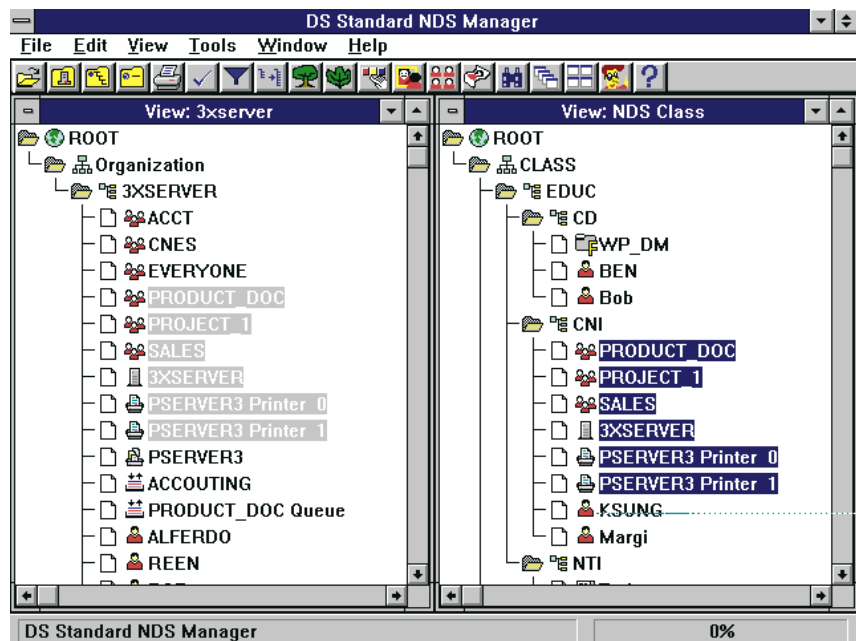
### Work Without Affecting Users

Like our industry-leading product Origin, DS Standard has a back-end database that provides network managers with the ability to model and manage changes without affecting the production or "live" network. Since you are free to make changes without impacting users, DS Standard also reduces the risk factors in addition to minimizing downtime when migrating to, and managing, NetWare Directory Services.

### Off-Line Philosophy

The key to PSI's advanced product architecture is its off-line database. It is this database that provides a built-in safety net and allows network managers to apply time-tested MIS practices when managing NetWare, such as staging changes, prototyping or design modeling, and recovery planning.

Perhaps the greatest advantage your network managers will enjoy is that they can now use powerful database commands to search and administer NDS, which means completing tasks in a fraction of the time and working during normal business hours.



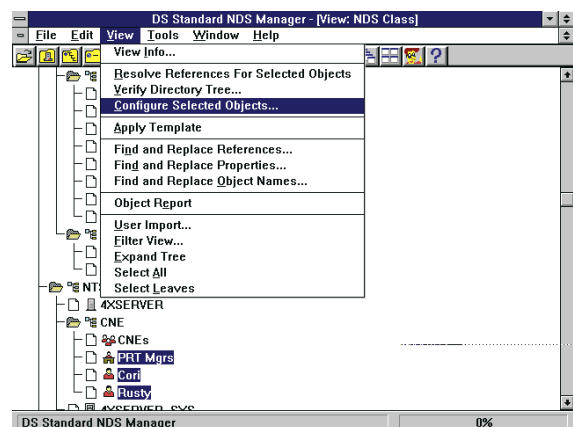
*Powerful Off-Line NDS Management*

## DISASTER PLANNING & RECOVERY

**"Since DS Standard can build our entire tree, restore file trustee assignments and resolve any problematic references, it is a central part of our NDS disaster recovery plans."**

**-- Aaron Schmiedel, Triton Energy**

DS Standard can also be used as a critical part of your disaster planning and recovery procedures. By storing a discovered image of your NDS tree in DS Standard, if any portion of the tree becomes corrupted, simply select the desired objects and Configure. DS Standard will either update existing objects or create new objects in your NDS tree.

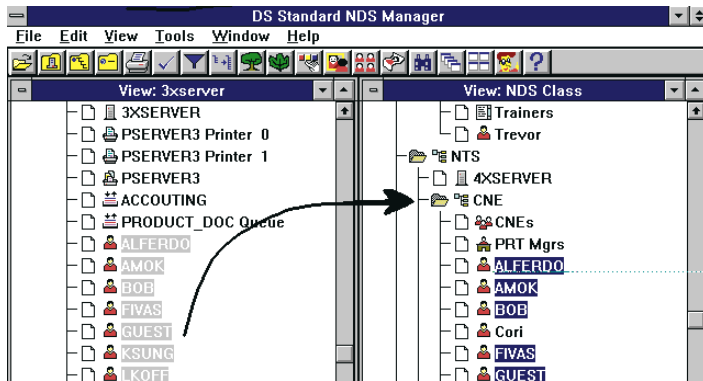


*Use DS Standard to selectively restore all, or a portion, of your NDS tree.*

## EASY MIGRATION

**“Folks, this is good stuff, and if you’re considering moving to NetWare 4.x, you should use DS Standard before you start. DS Standard is invaluable for anyone even thinking about implementing NDS.”**

**-- Jamie Lewis, PC WEEK**



*When migrating, simply drag-and-drop the bindery information into any of your NDS tree designs. Once completed, with a single command, DS Standard will run a "pre-configuration" verify on your "live" NDS tree; then if all is well, it will write your configuration to NDS.*

DS Standard makes migrating to NDS easy by dividing the tasks into three manageable steps: 1) Discover, 2) Model, and 3) Configure.

During the migration process you will find that DS Standard is useful when:

- ◆ Consolidating bindery servers
- ◆ Designing NDS trees
- ◆ Re-using and swapping NDS tree designs
- ◆ Applying naming conventions
- ◆ Migrating from a non-NetWare NOS
- ◆ Creating users from other databases
- ◆ Verifying NDS tree designs
- ◆ Merging objects from multiple servers, such as users, groups, and volumes
- ◆ Cleaning and preparing your “real” bindery data

## COMPUTER-AIDED NDS EXPERTISE

**“DS Standard includes a collection of on-line documentation, tutorial, and technical information called "The Assistant" that by itself is worth the price of entry for the wealth of useful NDS design & implementation data it contains.”**

**-- Ed Tittel and Deni Conner, NetWare For Dummies**

Whether this is your first NDS tree or if you are an NDS veteran, you will find The Assistant extremely helpful. In addition to including "real-world" information on DS Standard and NDS, it also includes helpful material on:

- ◆ Discovering and modeling NDS designs
- ◆ Configuring or restoring your NDS tree
- ◆ Performing specific “How To..” tasks
- ◆ Sample tree designs and naming conventions
- ◆ Case studies, including Novell’s implementation
- ◆ Trouble-shooting techniques

## EXPAND NDS MANAGEMENT CAPABILITIES

**“...DS Standard may become the No. 1 tool in your NetWare 4.x toolbox.”**

**-- William Wong, LAN TIMES**

**“...[DS Standard] is an indispensable tool that makes NDS directory-tree management a breeze.”**

**-- David P. Chernicoff, PC WEEK**

DS Standard can significantly reduce the costs and time required to manage NDS by providing powerful database capabilities for use when:

- ◆ Applying object standards
- ◆ Creating and populating new NDS properties and objects
- ◆ Finding security exceptions
- ◆ Backing up NDS tree structures
- ◆ Searching NDS objects
- ◆ Creating NDS reports
- ◆ Making mass changes
- ◆ Trouble-shooting NDS
- ◆ Documenting and logging tree changes
- ◆ Accessing computer-aided relevant and “real” NDS advice
- ◆ NDS Auditing
- ◆ And More ...

## ◆ NEW IN DS STANDARD NDS MANAGER

### ◆ 1. Make Sweeping Changes with Advanced Templates

Expand your NetWare 4 USER\_TEMPLATE capabilities by using any object and its selected properties as a template. For example, highlight all of the appropriate users and set all of the properties for Password Restrictions, Network Restrictions and File System Rights at once.

### 2. Discover Existing Binderries or NDS Trees

With a single command, “Discover” your current bindery and NDS environments.

### 3. Automatic Tree Design Review

Tree Verify will help keep your designs on track. It will verify, for example, the number of leaf objects in a container to ensure that the tree is configured within the guidelines of your corporate standards. And, while the factory-shipped defaults are based on industry experience and rules of thumb provided by the Novell NDS development team, they are also customizable to levels appropriate for your organization.

### ◆ 4. Help System Navigator

Use the DS Standard Help System Navigator to quickly find “How To's” or details regarding the many DS Standard capabilities.

### ◆ 5. NDS Object Auditing & Reporting Print Tree Designs

DS Standard allows users to quickly prepare detailed configuration reports on over 15 different types of NDS objects. It can also print your NDS tree designs for a pre-configuration analysis. Combine DS Standard's search engine and log files to

produce security exception reports, change management logs, object audit reports and more...

## 6. Copy Objects

No need to re-invent the wheel; create an object from any existing object. For example, add a new Organizational Role by highlighting any Organizational Role and selecting "Copy Object".

## ◆ 7. Ulmport

Save time by importing mass user definitions and changes via a text file. This is also ideal if you are migrating from a non-NetWare environment.

## 8. Access Computer-Aided NDS Expertise -- "The Assistant"

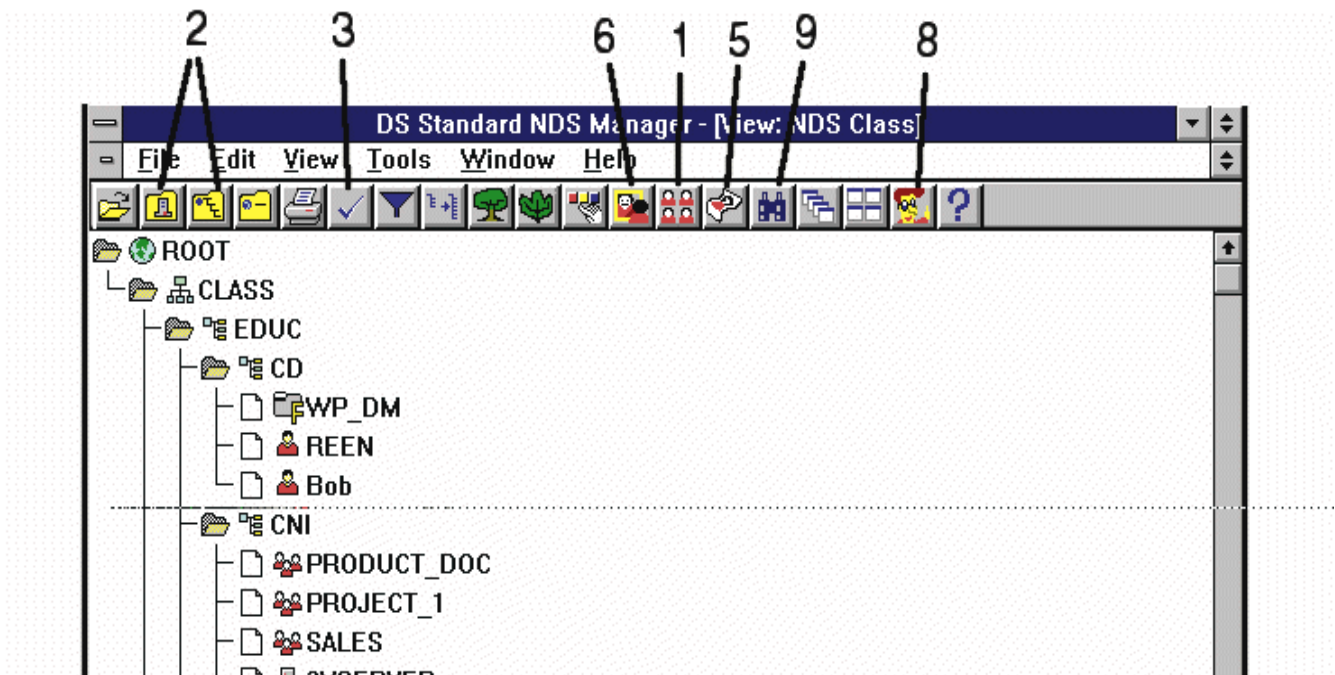
Reduce the NDS learning curve by using the computer-aided instruction in The Assistant to review the most up-to-date technical information about DS Standard, NetWare 4 and NDS. The Assistant contains "real-world" NDS advice and examples of tree designs.

## ◆ 9. Global Find and Replace

Save time by performing sweeping changes to any object that meets the specified criteria. Perform tasks, such as modifying multiple User Objects to require a password, adding a Group Membership or setting File Trustee privileges.

## ◆ 10. View Import/Export

Make your NDS teams more efficient by swapping designs, ideas and final tree structures.



[Back to Outline](#)

[Next: Easy Cost Justification](#)